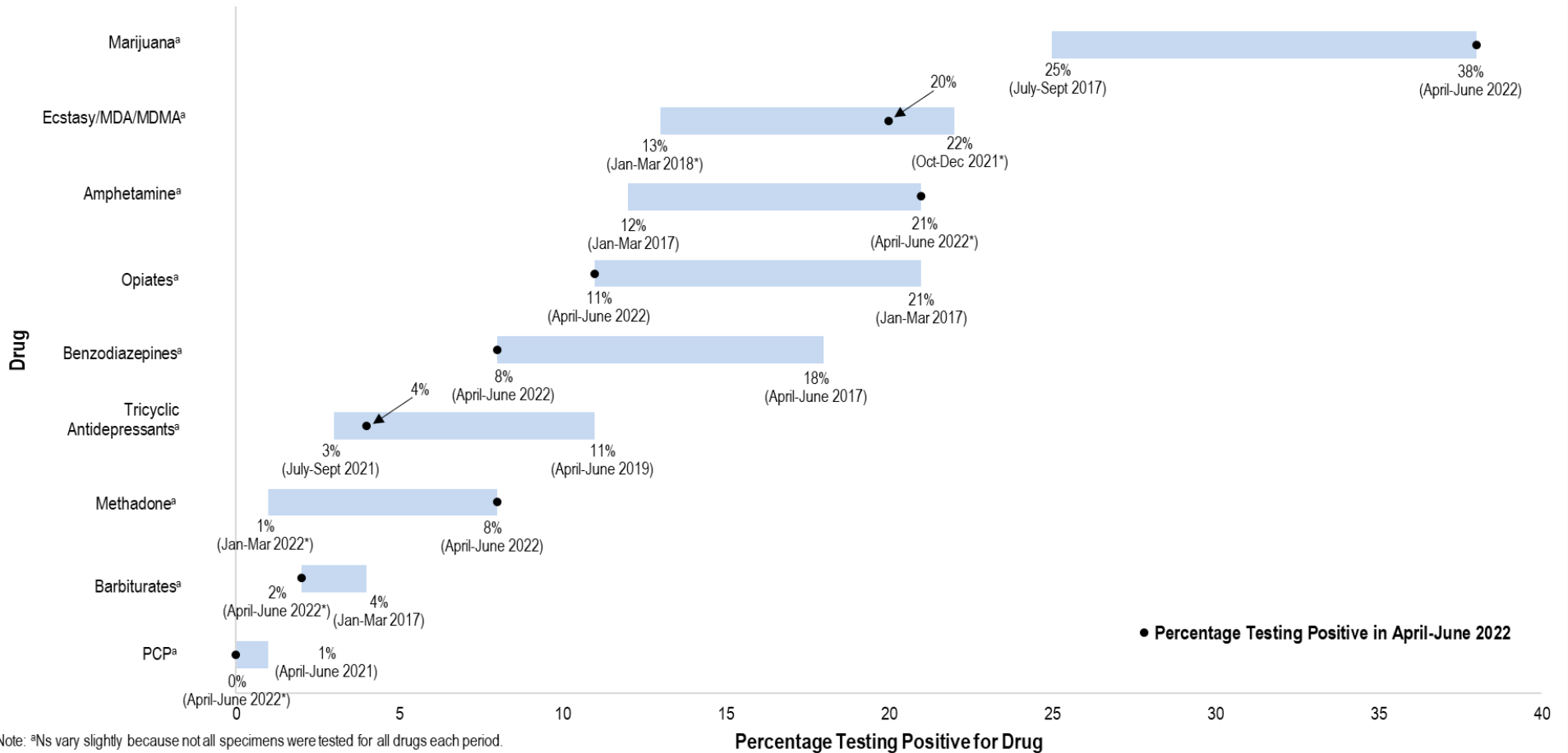


**Range of the High and Low of Quarterly Percentages Testing Positive for Each Drug at the HCA Florida West Hospital Emergency Department (ED), January 2017-June 2022**  
 (N=35,849 specimens collected from tested ED patients)



Note: <sup>a</sup>Ns vary slightly because not all specimens were tested for all drugs each period.  
 Cocaine not shown because of low testing rates.  
 If high or low occurred in more than one quarter, the most recent quarter was specified.  
 \*Percentage occurred in multiple quarters; most recent quarter indicated.