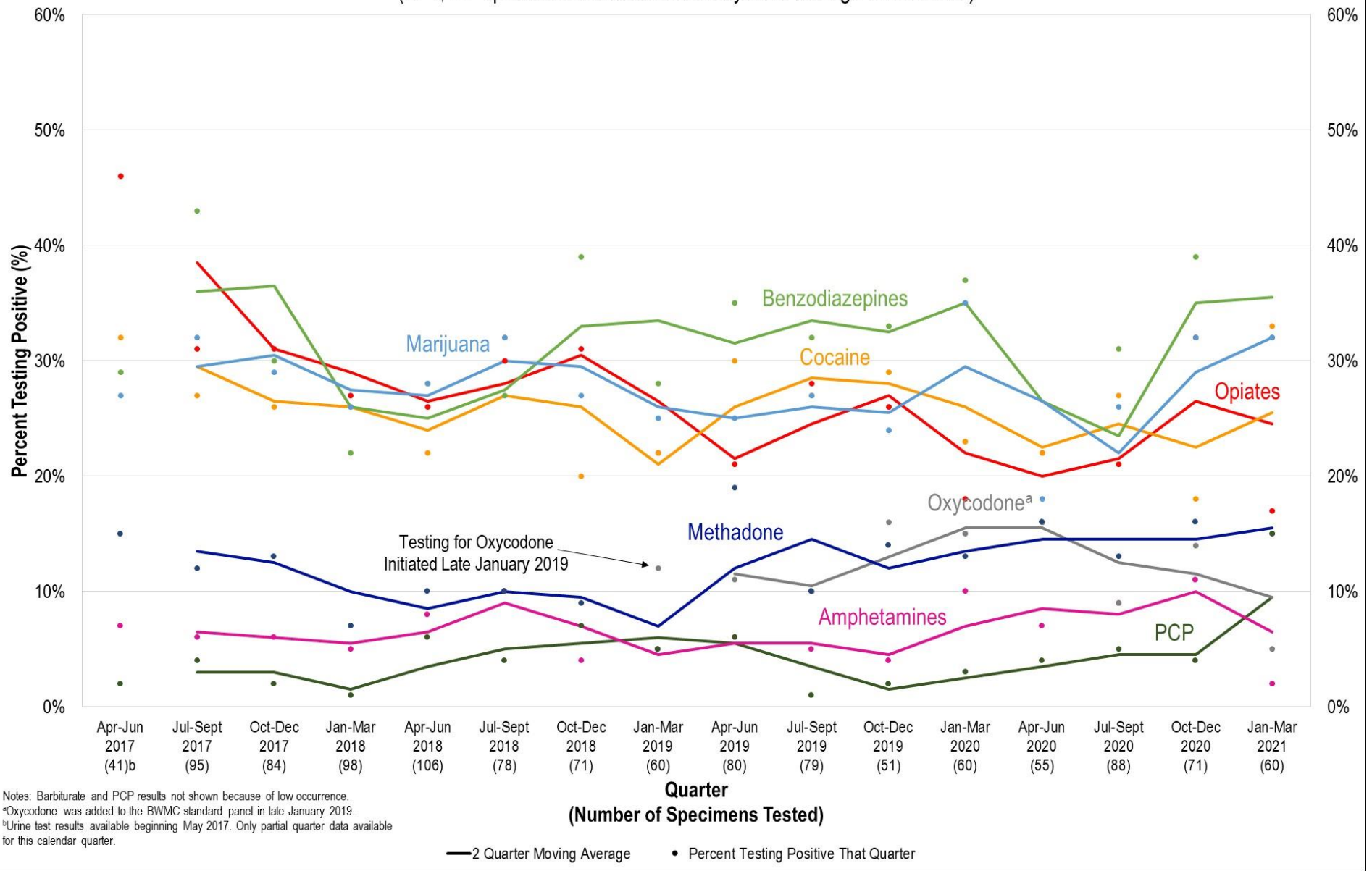


Figure 1: Drugs Detected in Specimens from University of Maryland Baltimore Washington Medical Center (BWMC) Emergency Department (ED) Drug Overdose Patients, By Quarter
 (N=1,177 specimens collected from May 2017 through March 2021)



- The percentage of specimens testing positive for PCP (15%) and cocaine (33%) reached series highs in the most recent quarter (January-March 2021).
- The percentage of specimens testing positive for opiates (17%) declined to a series low.