

Table 1: Drugs Detected in Specimens from University of Maryland Baltimore Washington Medical Center (BWMC) Emergency Department (ED) Drug Overdose Patients, By Quarter

(N=1,253 specimens collected from May 2017 through June 2021)

Quarter (N of specimens tested)	Marijuana %	Opiates %	PCP %	Cocaine %	Benzodiazepines %	Amphetamines %	Methadone %	Barbiturates %	Oxycodone ^a %
May-June 2017 ^b (41)	27	46 H	2	32	29	7	15	5	-
July-September 2017 (95)	32	31	4	27	43 H	6	12	3	-
October-December 2017 (84)	29	31	2	26	30	6	13	5 H	-
January-March 2018 (98)	26	27	1	26	22	5	7	2	-
April-June 2018 (106)	28	26	6	22	28	8	10	2	-
July-September 2018 (78)	32	30	4	32	27	10	10	0	-
October-December 2018 (71)	27	31	7	20	39	4	9	0	-
January-March 2019 (60)	25	22	5	22	28	5	5 L	0	12
April-June 2019 (80)	25	21	6	30	35	6	19	1	11
July-September 2019 (79)	27	28	1 L	27	32	5	10	0	10
October-December 2019 (51)	24	26	2	29	33	4	14	2	16
January-March 2020 (60)	35	18	3	23	37	10	13	2	15
April-June 2020 (55)	18 L	22	4	22	16 L	7	16	2	16
July-September 2020 (88)	26	21	5	27	31	9	13	1	9
October-December 2020 (71)	32	32	4	18 L	39	11 H	16	4	14
January-March 2021 (60)	32	17 L	15 H	33 H	32	2 L	15	0	5 L
April-June 2021 (76)	42 H	24	3	32	29	8	22 H	0 L	16 H

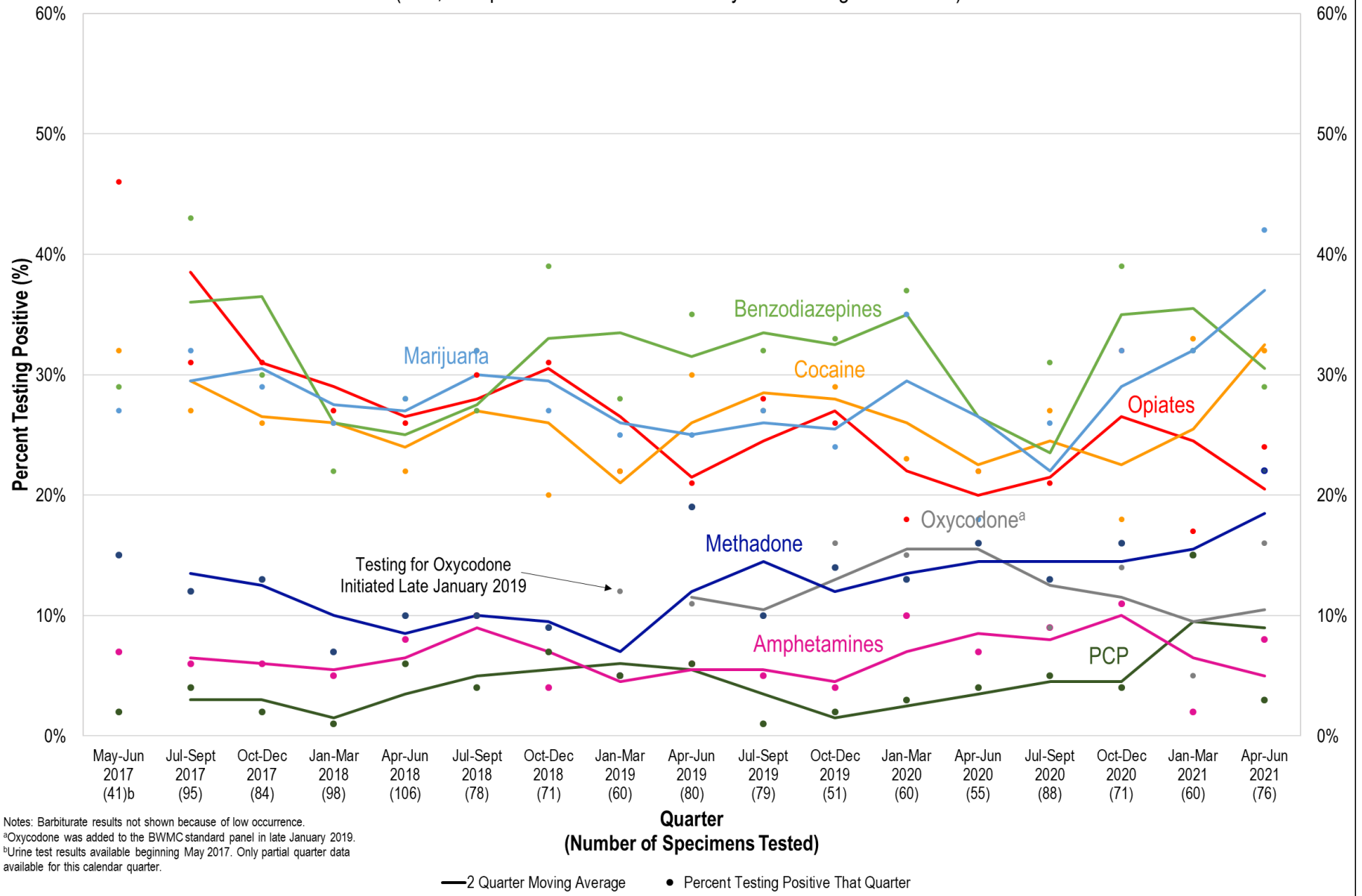
Notes: H: Highest %. L: Lowest %. If there are multiple highs or lows, the most recent quarter is selected as the high/low.

^aOxycodone was added to the BWMC standard panel in late January 2019.

^bToxicology results available beginning May 2017. Only partial quarter data available for this calendar quarter.

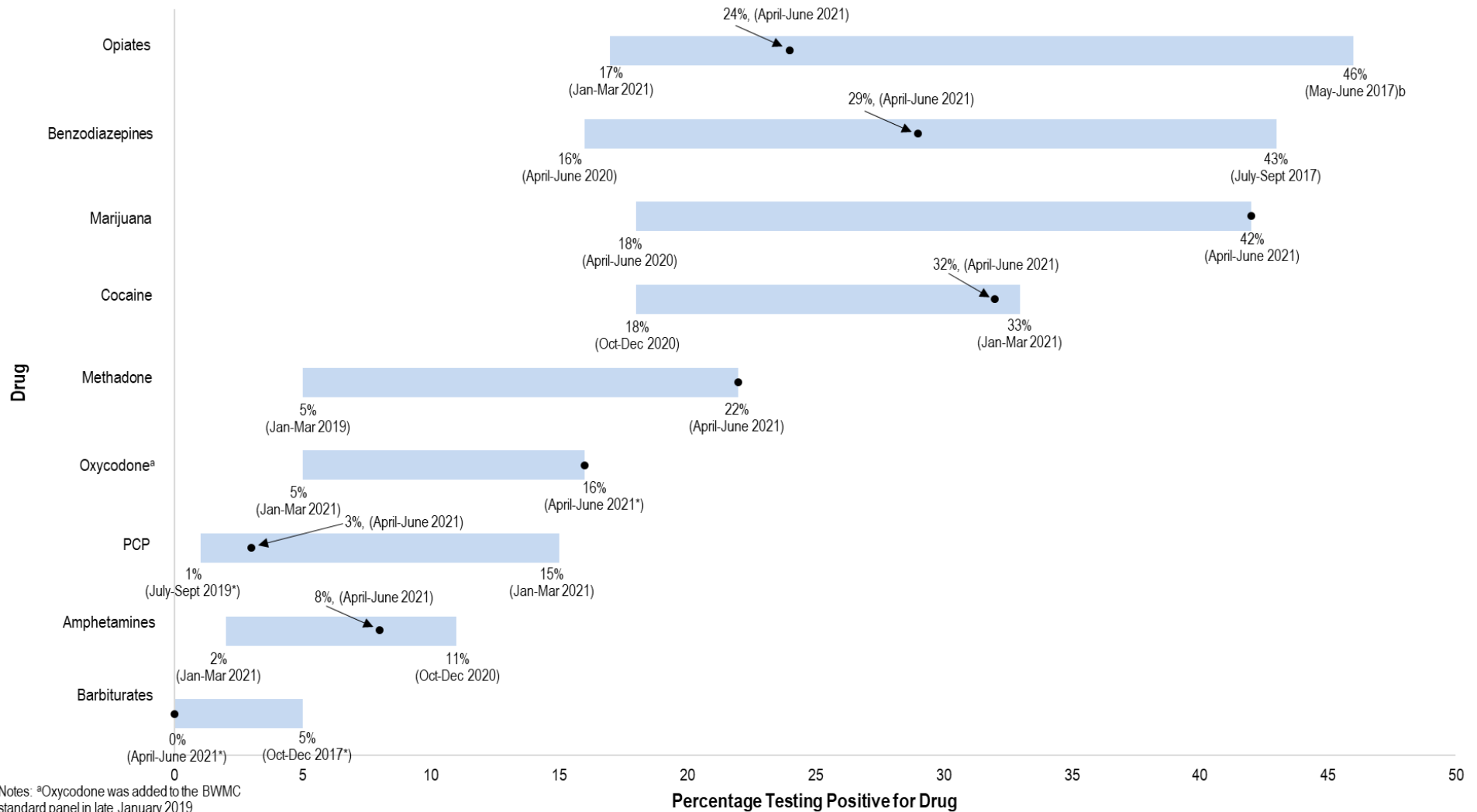
Marijuana (42%), methadone (22%), and oxycodone (16%) reached series highs in April-June 2021.

Figure 1: Drugs Detected in Specimens from University of Maryland Baltimore Washington Medical Center (BWMC) Emergency Department (ED) Drug Overdose Patients, By Quarter
 (N=1,253 specimens collected from May 2017 through June 2021)



Marijuana (42%), methadone (22%), and oxycodone (16%) reached series highs in April-June 2021.

Figure 2: Range of the High and Low of Quarterly Percentages Testing Positive for Each Drug at the UM Baltimore Washington Medical Center (BWMC) Emergency Department (ED), May 2017-June 2021
 (N=1,253 specimens collected from drug overdose patients)



Notes: ^aOxycodone was added to the BWMC standard panel in late January 2019.

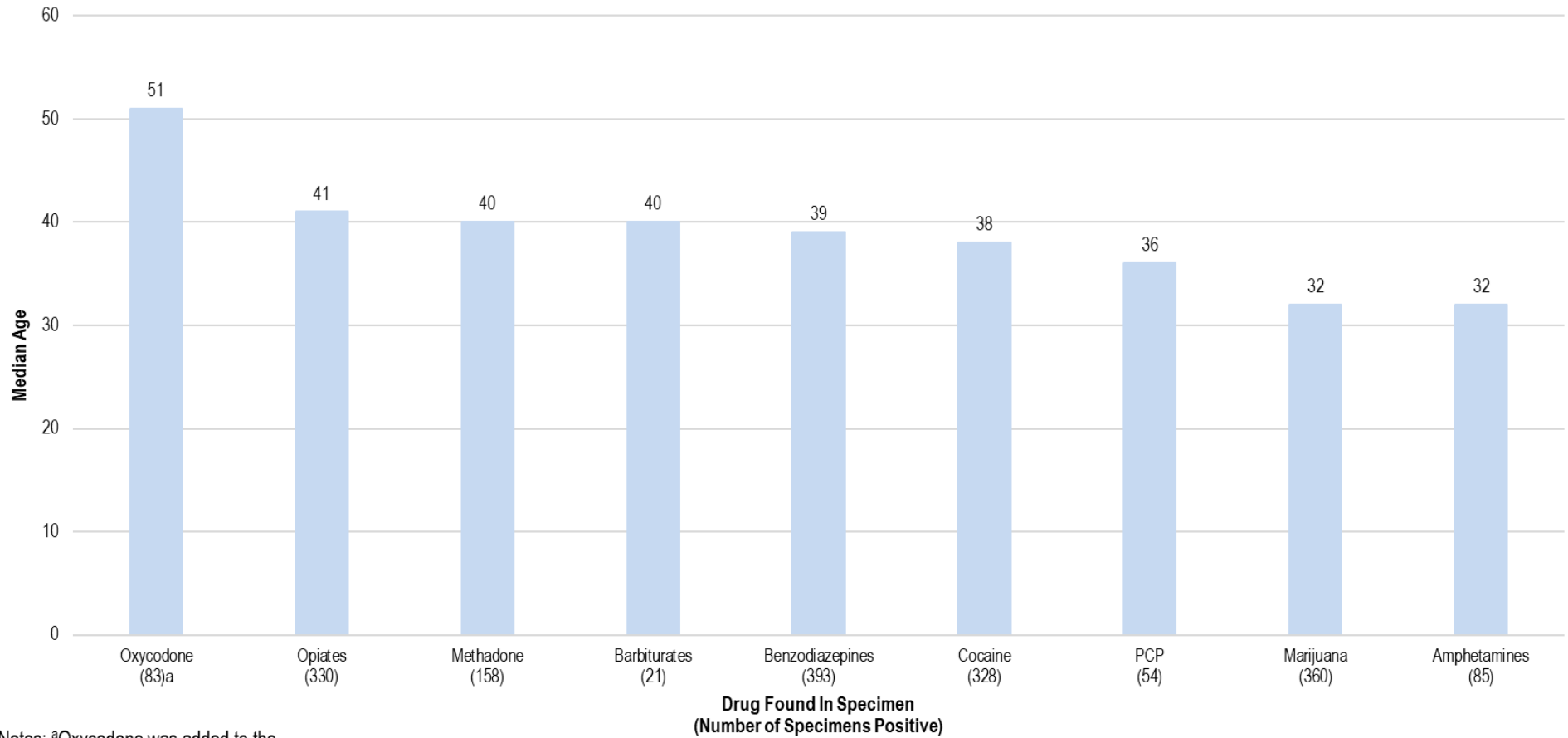
^bUrine test results available beginning May 2017. Only partial quarter data available for this calendar quarter.

● Percentage Testing Positive in April-June 2021

*Percentage occurred in multiple quarters; most recent quarter indicated

Marijuana, cocaine, methadone, and oxycodone are near/at the top of their 4-year ranges.

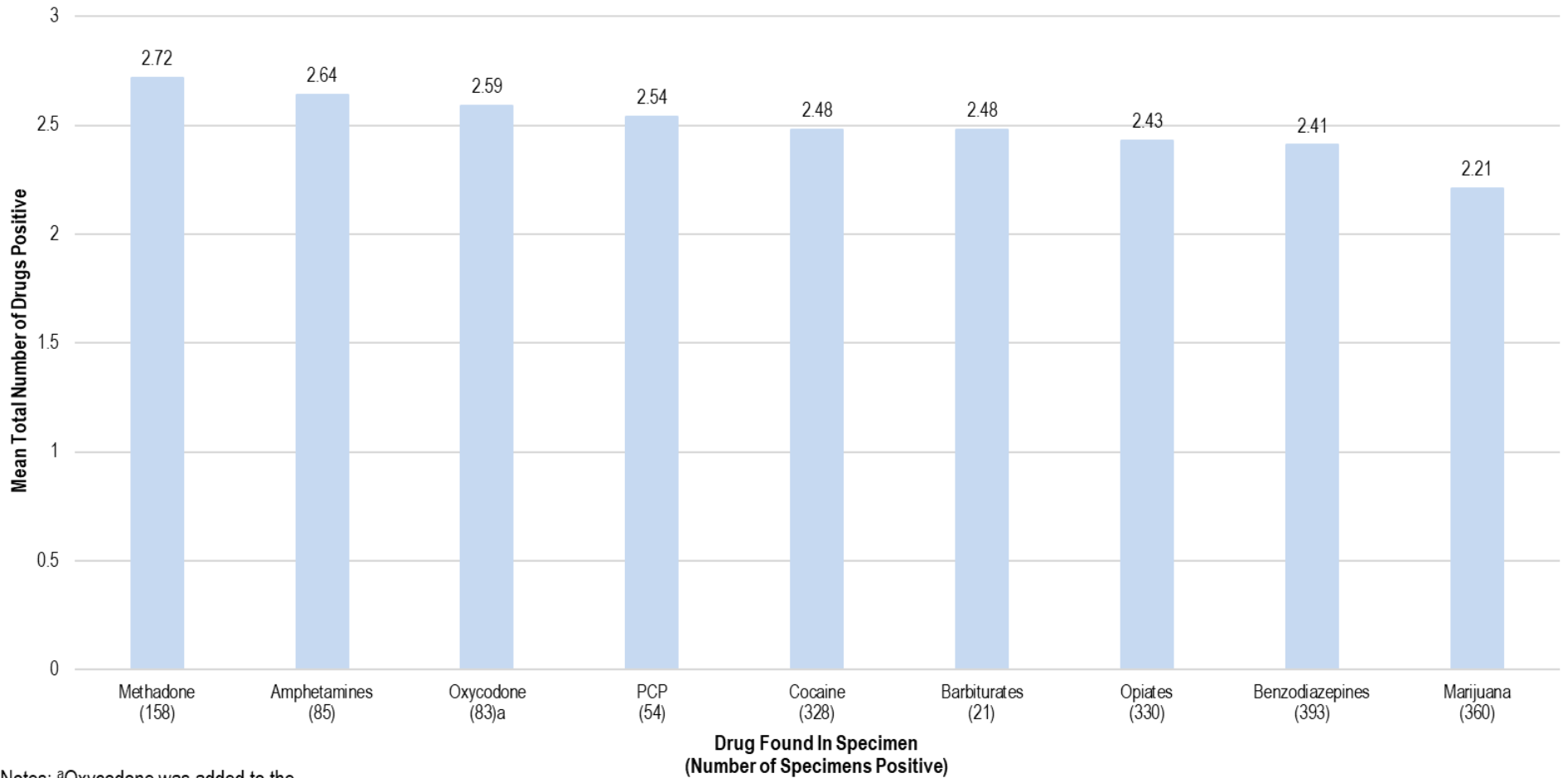
Figure 3: Median Patient Age, By Drug Positive in Specimens from University of Maryland Baltimore Washington Medical Center (BWMC) Emergency Department (ED) Drug Overdose Patients
(N=1,253 specimens collected from May 2017 through June 2021)



Notes: ^aOxycodone was added to the BWMC standard panel in late January 2019.

Patients testing positive for oxycodone, opiates, and methadone were the oldest. Patients positive for PCP, marijuana, and amphetamines were the youngest.

Figure 4: Mean Total Number of Drugs Positive, By Drug Positive in Specimens from UM Baltimore Washington Medical Center (BWMC) Emergency Department (ED) Drug Overdose Patients
(N=1,253 specimens collected from May 2017 through June 2021)

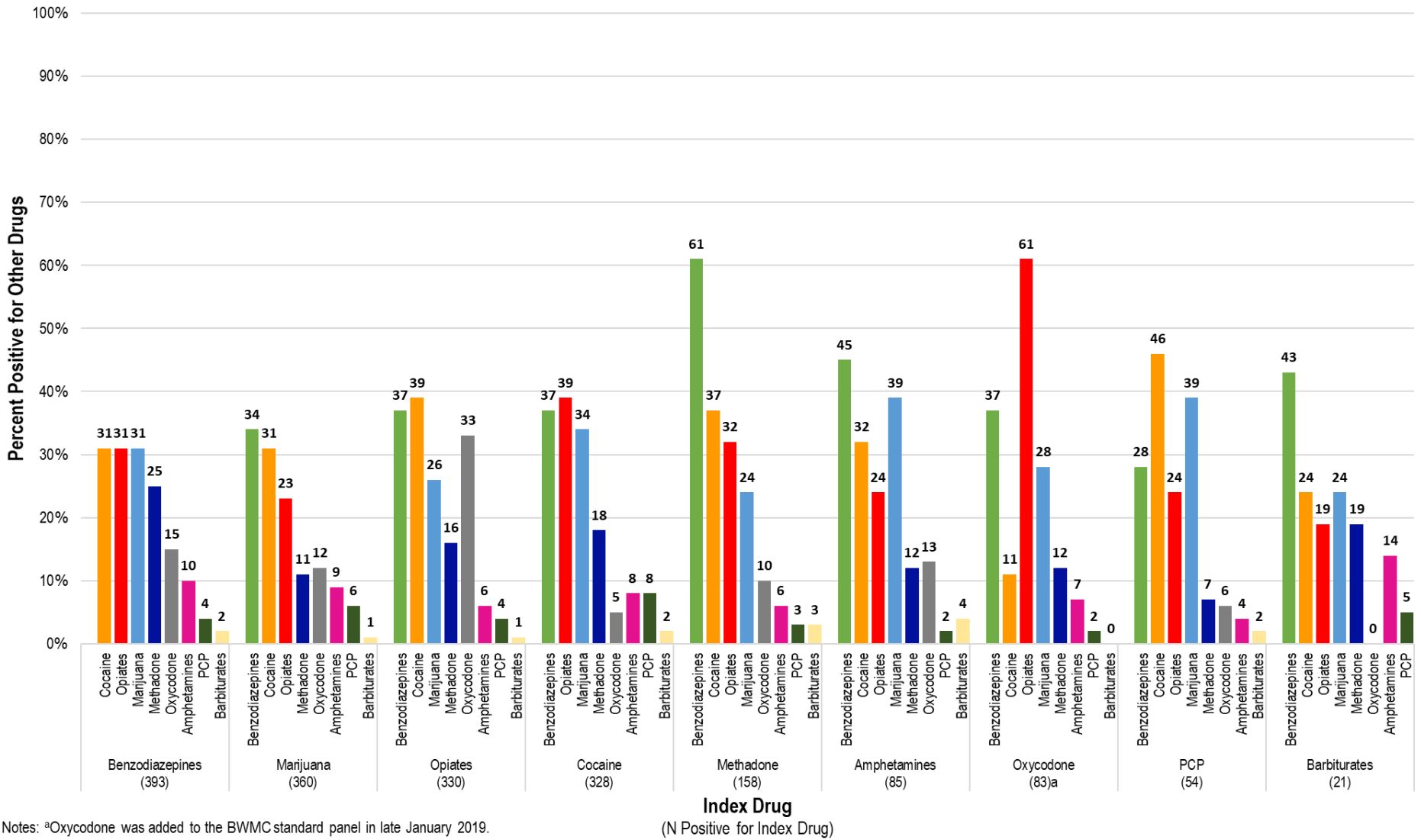


Notes: ^aOxycodone was added to the BWMC standard panel in late January 2019.

Patients positive for methadone had the largest average total number of drugs detected in their specimens (2.72), while patients positive for marijuana had the lowest number (2.21).

Figure 5: Other Drugs Found in Specimens Positive for an Index Drug

(N=1,253 specimens collected from May 2017 through June 2021 from UM BWMC)



Notes: ^aOxycodone was added to the BWMC standard panel in late January 2019.

(N Positive for Index Drug)

Legend: Benzodiazepines (green), Cocaine (orange), Opiates (red), Marijuana (blue), Methadone (dark blue), Oxycodone (grey), Amphetamines (pink), PCP (dark green), Barbiturates (yellow)

61% of methadone positive patients, 45% of amphetamine positive patients, and 37% of opiate positive patients also tested positive for benzodiazepines. Benzodiazepine positive specimens were most likely to also contain cocaine (31%), opiates (31%), or marijuana (31%).