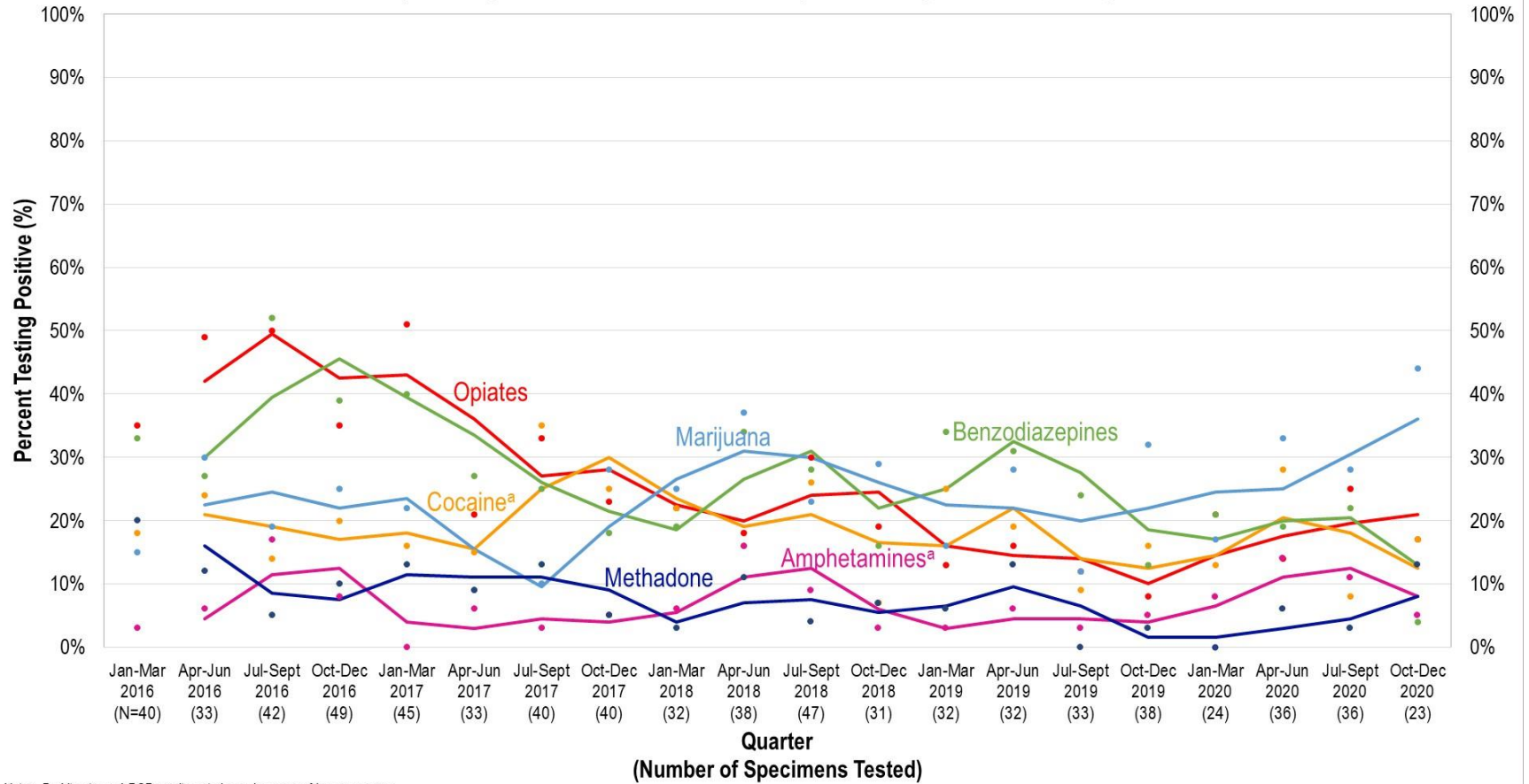


**Figure 1: Drugs Detected in Specimens from University of Maryland St. Joseph Medical Center (SJMC) Emergency Department (ED) Drug Overdose Patients**  
(N=724 specimens collected from January 2016 through December 2020)



Notes: Barbiturate and PCP results not shown because of low occurrence.  
<sup>a</sup>Ns vary slightly because not all specimens were tested for all drugs each period.

— 2 Quarter Moving Average      • Percent Testing Positive That Quarter